

Agilent Technologies DS090008 Series low-profile high-performance oscilloscopes/digitizers

Data Sheet

Engineered for research at the cutting edge of modern physics



Low-profile oscilloscopes/digitizers

DS090808A: 8-bit, 8 ch, 8GHz, 40 GS/s

DS091208A: 8-bit, 8 ch, 12GHz, 40 GS/s

DS091308A: 8-bit, 8 ch, 13GHz, 40 GS/s



Agilent Technologies

Why choose Agilent low profile oscilloscope/digitizers for your high performance measurement needs?

When you're working in high energy physics, radar or doing spectrum monitoring you're pushing scientific research to the limits, and your measurement technology has to keep pace. Agilent offers industry-leading digitizing performance in an industry-unique low profile package to ensure that you make the most accurate measurements every time.

The Agilent Infiniium 90008 Series low profile oscilloscope/digitizers house eight 40GSa/s ADCs and two CPUs in a 7U high package for the industry's densest channel count at these speeds.



Infiniium 90008A Series oscilloscopes/digitizers

Model	Bandwidth	Channel Count	Resolution	Sample Rate	Memory Depth
DSO91308A	13 GHz	8	8 bits	40 GSa/s on all channels (25 ps sample spacing)	10 Mpts std. up to 1 Gpt per channel
DSO91208A	12 GHz				
DSO90808A	8 GHz				

Key features:

- Optional high-speed PCIe bus transfers data to external PC at sustained rates up to 150 MB/s
- Certified with Citrix Corporation for full operation without hard drive
- Selected filter system to provide response with less than 0.3% pre-shoot
- Device drivers for VxWorks, LabVIEW RT, and Linux, with application code examples for MATLAB, C/C++, Visual Basic, LabVIEW, and LabWindows/CVI
- Options from extensive software applications library including InfiniiScan three stage event triggering, EZJIT jitter analysis, Vector Signal Analysis (VSA) software, and de-embedding and equalization software.

How much time can I capture?

Sampling Rate	10 Mpts of memory	20 Mpts of memory	50 Mpts of memory	100 Mpts of memory	200 Mpts of memory	500 Mpts of memory	1 Gpts of memory
40 GSa/s	250 μ s	500 μ s	1.25 ms	2.5 ms	5.0 ms	12.5 ms	25.0 ms
20 GSa/s	500 μ s	1 ms	2.5 ms	5.0 ms	10.0 ms	25.0 ms	50.0 ms

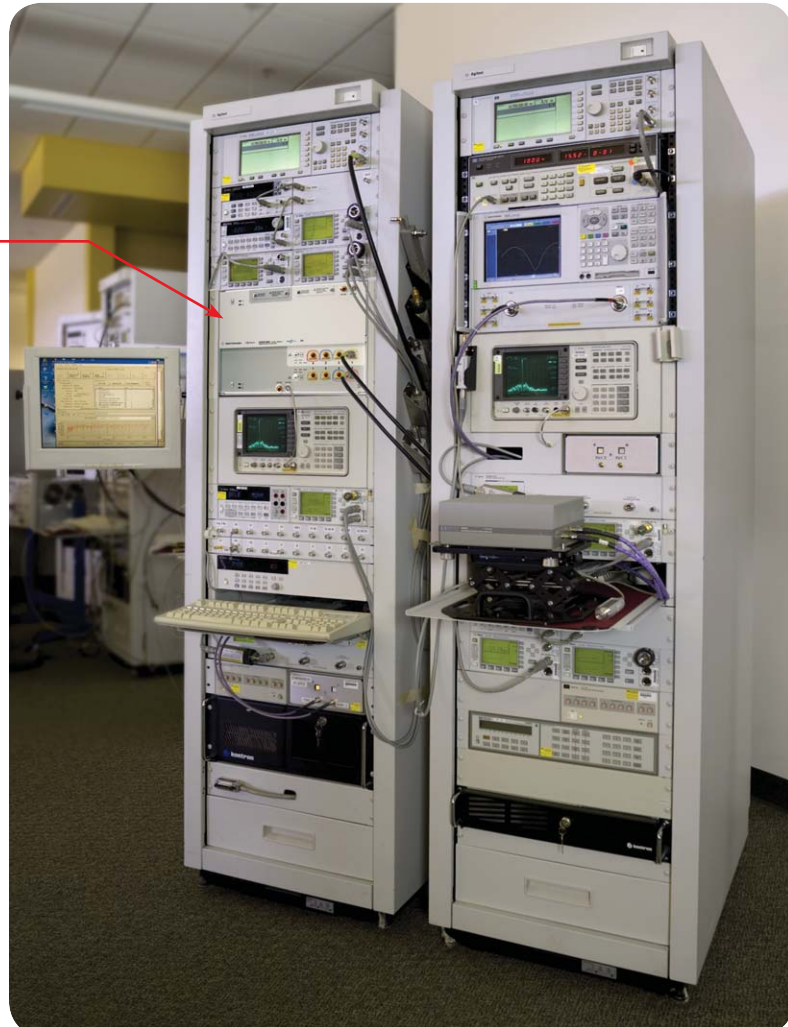
Note: time span capture = memory depth x 1/ sampling rate

Enabling research at the cutting edge of physics

Agilent has engineered the Infiniium 90008 Series oscilloscope/digitizers to meet your most demanding requirements by delivering the features you need to ensure fast and reliable measurements every time:

1. Unmatched real-time measurement accuracy
2. Fast offload speeds and compatibility with industry standard computation packages
3. Powerful internal capabilities with dual on-board PCs and off-the-shelf software

Get 8 channels of 40 GSa/s digitizer rate in 7U high 19" rack mount package



Unmatched real-time measurement accuracy

Industry's lowest noise floor: To enable our DS090008 Series digitizers to operate at high frequencies with minimal electromagnetic interference (EMI) we relied on our expertise in radio frequency (RF) technology. Agilent invested in key technology blocks like our proprietary Faraday caged front end to deliver the lowest noise floor in the industry for the most accurate measurements available.

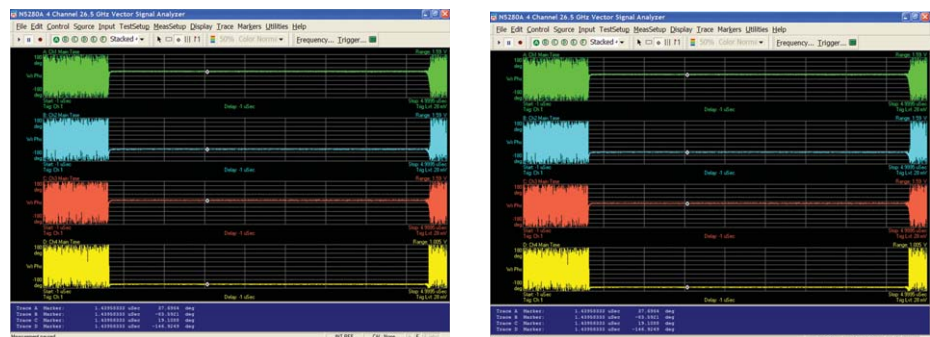
Unmatched real-time measurement accuracy

Precision time base:

Each bank of four digitizers has a precision crystal-controlled time base. Sample rates can be selected, in a 1, 2, 2.5 4, 5 sequence, from 10 S/s to 40 GS/s. An internal trigger time interpolator (TTI) with high timing resolution is used to assist with trigger time measurements and positioning with respect to the internal clock (sampling time). The digitizers can also be locked to an external 10 MHz reference. The digitizers feature a sequence acquisition mode that allows the capture and storage of consecutive “single” waveforms. In segmented memory mode the acquisition memory is divided into segments. Waveforms are stored in successive memory segments as they arrive based on a trigger event. The memory can be divided into any number of segments between 2 and 130,000, with segment lengths from 16 points up to 0.5 G points (depending on installed memory). Sequence acquisition mode is extremely useful in almost all impulse-response type applications such as radar, sonar, lidar, time-of-flight, ultrasonics, medical and biomedical research.

Full bandwidth probing and accurate de-embedding and equalization software:

The performance of Agilent’s oscilloscopes is matched by the superiority of our probing, de-embedding and equalization offerings. Maintain full bandwidth performance to the probe tip with our InfiniiMax probing solutions, including SMA cables and high temperature probes. Equalize waveforms with our hardware accelerated N5465A InfiniiSim Waveform Transformation Toolset. Configurable system modeling allows you to remove the deleterious effects of unwanted channel elements, simulate waveforms with channel models inserted, view waveforms in physically unprobeable locations, and compensate for loading of probes and fixtures. The N5461A Serial Data Equalization software allows you to model equalization techniques in real time.



Multi channel phase coherent Vector Signal Analysis

Unmatched real-time measurement accuracy

Multi-module synchronization

Each module contains 2 independently synchronized 4-channel digitizers. If more than four synchronous data acquisition channels are required, multiple digitizers can be combined in one of two ways. The first is to utilize the auxiliary trigger in and trigger out, which provides time correlation and synchronization up to 30 ns. Multiple channel synchronization to sub pico second accuracy for five and more channels may be achieved by providing a distributed trigger signal to the aux trigger of each bank of four channels. Multiple modules can be connected in either fashion enabling hundreds of 40 GSa/s time-correlated channels.

Fast offload speeds and compatibility with industry standard computation packages

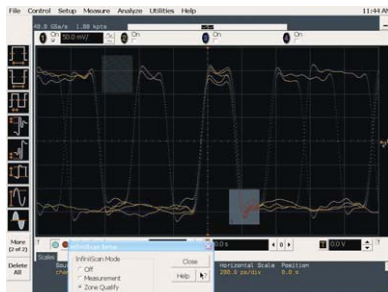
The memory and acquisition controller component of our acquisition system is a digital CMOS integrated circuit. A high-speed data demultiplexer with on-board memory, it is designed to capture and memorize 8-bit digital data, at speeds of up to 40 GSa/s. The DS090008A series digitizers have provisions for up to 1 Gpt per channel of acquisition memory. Remote and offload access through 10/100/1000 BaseT LAN interface with Web-enabled connectivity using ultra-responsive Ultra VNC. GPIB over LAN provides remote measurement. LXI class C compliant. A USB 2.0 device port lets you control the scope and transfer data via USB 2.0.

Offload data for custom analysis on your PC using an optional high-speed PCIe bus card available through www.dolphinics.com to transfer data at sustained rates up to 150 MB/s. Device drivers for VxWorks, LabVIEW RT, and Linux, with application code examples for MATLAB, C/C++, Visual Basic, LabVIEW, and LabWindows/CVI come standard.

Powerful on board capabilities with dual PCs and off-the-shelf software

Each 8 channel module boasts two PCs that run application software and provide standard I/O functionality. In addition, custom IDA (Infiniium Data Accelerator) hardware on the acquisition boards speeds measurements requiring filtering and math algorithms. Packed with numerous general-purpose measurements and analysis features, Infiniium 90008 Series oscilloscope/digitizers can also be outfitted with a number of unique software options. Supported application packages can speed scientist's insight into research questions. Key software options are listed on the following pages. For a complete list of supported software visit www.agilent.com/find/scope-apps

Software options to aid testing



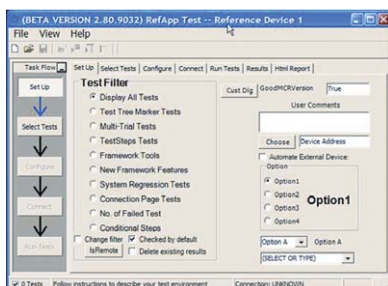
Identify signal integrity issues with InfiniiScan Zone – Qualify triggering.

InfiniiScan event identification (N5415A)

Rapidly trigger on complex events and identify signal integrity issues. This innovative software quickly scans through thousands of acquired waveform cycles and isolates anomalous signal behavior.

This application is supported on all models.

For more information: www.agilent.com/find/infiniiScan



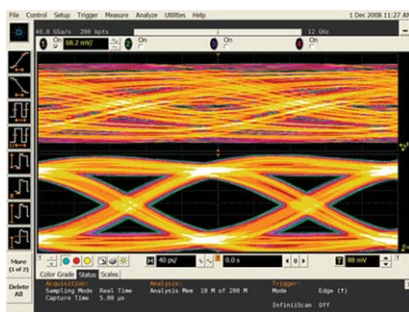
Control your applications remotely.

Infiniium application remote interface (N5452A)

Operate your Infiniium compliance and validation applications remotely using .NET languages.

This application is supported on all models.

For more information: www.agilent.com/find/RPI



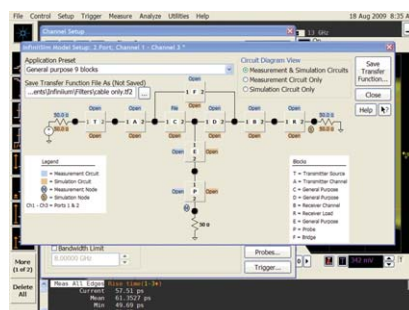
Reduce receiver errors by opening tightly shut eyes.

Serial Data Equalization (N5461A)

Measure at the pin and use equalization to see a virtual eye on the other side of an equalizer. Model equalization techniques such as DFE, FFE, and CTLE.

This application is supported on all models.

For more information: www.agilent.com/find/SDE



Model channel effects including reflection.

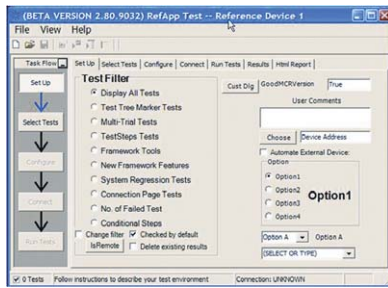
InfiniiSim Waveform Transformation Toolset (N5465A)

Expand the measurement capability of your scope with the 89601A vector signal analysis software. This advanced DSP-based software takes the digitized signal data from the scope and displays FFT-based spectrum analysis and wide-bandwidth analysis for a wide variety of modulated signals from simple analog modulations to cutting edge OFDM and MIMO communication signals.

This application is supported on all models.

For more information: www.agilent.com/find/InfiniiSim

Software options to aid testing

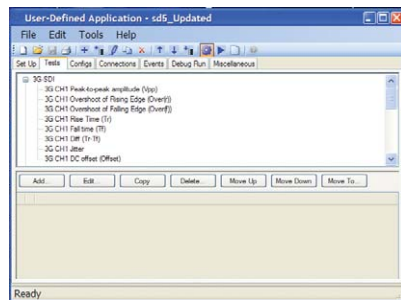


Control your applications remotely.

MATLAB® data analysis software (Option 061 or 062 on new scope purchases)

MATLAB is a data analysis software environment and scripting language used by over 1,000,000 users in aerospace/defense, automotive, communications, electronics, and other applications. MATLAB is now available directly from Agilent as in instrument option with the purchase of your Agilent 90000 Series oscilloscope. Install MATLAB on your oscilloscope or remote PC to make customized measurements, design and apply your own filters to oscilloscope signals, graphically visualize signals in 2-D or 3-D plots, automate measurements, or build test applications. Purchase MATLAB with your Agilent 90000 Series oscilloscope to ensure version compatibility and so that your MATLAB software license is always available when you need it.

For more information: www.agilent.com/find/matlab_oscilloscopes

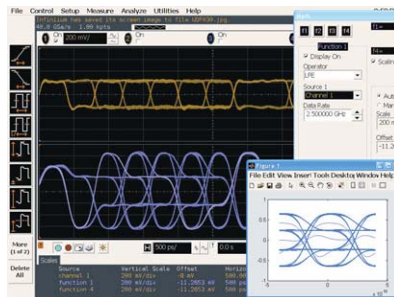


Quickly automate oscilloscope measurements.

User-definable application (N5467A)

Rapidly develop your own automated measurements and tests. This application provides the framework you need to quickly program and automate any single or set of measurements the oscilloscope can make. The application also provides full control of other Agilent instruments and HTML reporting capabilities.

For more information: www.agilent.com/find/UDA



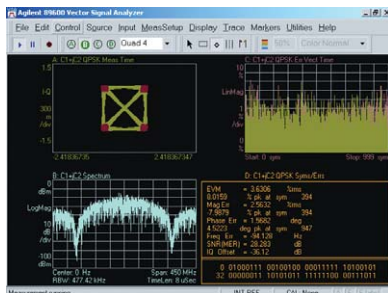
Signal equalization using user-defined function.

User-defined function (N5430A)

If we haven't provided exactly what you need, use the N5430A User Defined Function software to create it yourself. Develop your own math functions or filters using MATLAB. Your custom functionality is seamlessly integrated into the Infiniium 90000 menus and results are displayed on the scope screen. This requires MATLAB (available as Option 062) to be installed directly on the oscilloscope. Agilent is the only T&M manufacturer today that sells and supports MATLAB as its own product.

This application is supported on all models and requires MATLAB software (not included with UDF)

For more information: www.agilent.com/find/UDF



Use vector signal analysis software to see FFT-based spectrum analysis.

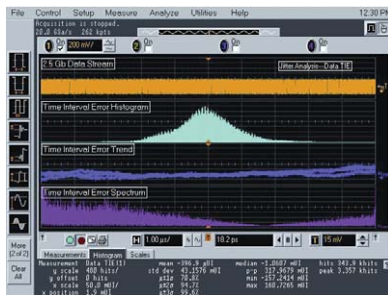
Vector signal analysis software (89601A)

Expand the measurement capability of your scope with the 89601A vector signal analysis software. This advanced DSP-based software takes the digitized signal data from the scope and displays FFT-based spectrum analysis and wide-bandwidth digital modulation analysis for wireless communication signals such as WCDMA and cdma2000 and wireless networking signals such as 802.11 WiFi and 802.16 WiMax.

Take advantage of the super-wide bandwidth of your scope to capture and evaluate radar signals.

For more information: www.agilent.com/find/VSA

Software options to aid testing



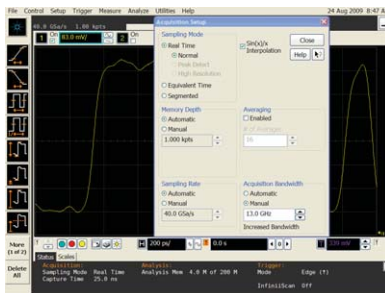
Conduct jitter analysis.

EZJIT analysis software (E2681A)

Quickly characterize and evaluate most commonly needed jitter measurements, including cycle-cycle, N-cycle, period, time-interval, error, setup and hold time, histograms, measurement trending and jitter spectrum.

This application is supported on all models and is standard on DSA models.

For more information: www.agilent.com/find/EZJIT



Eliminate excess noise.

Noise reduction and bandwidth control (N5403A)

Eliminate excess noise caused by high oscilloscope bandwidth that you don't need. Noise Reduction allows you to choose the right bandwidth for your measurement, ensuring you make the most accurate measurement.

This application is supported on all models and is standard on DSA models.

For more information: www.agilent.com/find/N5403A

Infiniium 90008 Low-profile oscilloscopes/digitizers

Performance characteristics

Vertical

Input channels	Eight		
Analog bandwidth (−3 dB)*, 10	90808A 8 GHz	91208A 12 GHz	91308A 12 GHz
DSP enhanced bandwidth ³	91304A: 13-GHz real-time, user-selectable DSP enhanced bandwidth		
Rise time/fall time ¹¹ 10 - 90% 20 - 80%	90808A 54 ps 38 ps	91208A 35 ps 25 ps	91308A 32 ps 23 ps
Input impedance	50 Ω, ± 3%		
Sensitivity ¹	1 mV/div to 1 V/div		
Input coupling	DC		
Vertical resolution ²	8 bits, ≥ 12 bits with averaging		
Channel to channel isolation (any two channels with equal V/div settings)	DC to 3 GHz: 90808A/91208A/91308A: 60 dB (≥ 1000:1) 3 GHz to 8 GHz: 40 dB (≥ 100:1) 8 GHz to BW: 35 dB (≥ 56:1)		
DC gain accuracy*, 1	± 2% of full scale at full resolution channel scale (± 2.5% for 5mV/div)		
Maximum input voltage*	± 5 V		
Offset range*, 1	Vertical sensitivity 0 mV/div to ≥ 40 mV/div > 40 mV/div to ≥ 75 mV/div > 75 mV/div to ≥ 130 mV/div > 130 mV/div to ≥ 240 mV/div > 240 mV/div	Available offset ± 0.4 V ± 0.9 V ± 1.6 V ± 3.0 V ± 4.0 V	
Offset accuracy*, 1	≤ 3.5 V: ± (2% of channel offset + 1% of full scale) + 1 mV > 3.5 V: ± (2% of channel offset + 1% of full scale)		
Dynamic range	± 4 div from center screen		
DC voltage measurement accuracy*, 1	Dual cursor: ± [(DC gain accuracy) + (resolution)] Single cursor: ± [(DC gain accuracy) + (offset accuracy) + (resolution/2)]		
RMS noise floor (scope only)			
Volts/div	90808A	91208A	91308A
5 mV	1322 μV	435 μV	467 μV
10 mV	358 μV	483 μV	536 μV
20 mV	498 μV	650 μV	758 μV
50 mV	1.15 mV	1.45 mV	1.73 mV
100 mV	2.22 mV	2.80 mV	3.37 mV
200 mV	4.28 mV	5.41 mV	6.58 mV
500 mV	11.5 mV	14.7 mV	17.4 mV
1 V	22.3 mV	28.5 mV	34.1 mV

* Denotes warranted specifications, all others are typical. Specifications are valid after a 30-minute warm-up period, and ±5 °C from annual calibration temperature.

1 Full scale is defined as 8 vertical divisions. Magnification is used below 5 mV/div. Below 5 mV/div, full-scale is defined as 40 mV. The major scale settings are 5 mV, 10 mV, 20 mV, 50 mV, 100 mV, 200 mV, 500 mV, 1 V.

2 Vertical resolution for 8 bits = 0.4% of full scale, for 12 bits = 0.024% of full scale.

3 13 GHz DSP enhanced bandwidth not applicable at 5 mV/div.

10 11.8 GHz analog bandwidth at 5 mV/div for DSO91308A and DSO91208A models.

11 Calculated from the bandwidth.

Infiniium 90008 Low-profile oscilloscopes/digitizers

Performance characteristics

Vertical (continued)

RMS noise floor (scope with probe)	90808A with 1168A	91208A with 1169A	91308A with 1169A
Volts/div			
20 mV	2.2 mV	2.5 mV	2.7 mV
50 mV	2.3 mV	2.8 mV	3.1 mV
100 mV	2.9 mV	3.5 mV	4.2 mV
200 mV	4.7 mV	5.9 mV	7.5 mV
500 mV	12 mV	15 mV	19 mV
1 V	23 mV	28 mV	37 mV

Horizontal

Main timebase range	5 ps/div to 20 s/div real-time, 5 ps/div to 500 ns/div equivalent-time
Main timebase delay range	–200 s to 200 s real-time, –25 µs to 200 s equivalent-time
Zoom timebase range	1 ps/div to current main time scale setting
Channel deskew	± 25 µs range, 100 fs resolution
Time scale accuracy*	± (0.4 + 0.5 * YrsSinceCal) ppm pk

Delta-time measurement
accuracy^{6a, 6b, 7}

Absolute,
averaging disabled

$$\sqrt{\left(\frac{5.0 \cdot \text{Noise}}{\text{SlewRate}}\right)^2 + 20 \times 10^{-24}} + \frac{\text{TimeScaleAccy} \cdot \text{Reading}}{2} \text{ sec pk}$$

Absolute,
> 256 averages

$$\sqrt{\left(\frac{0.35 \cdot \text{Noise}}{\text{SlewRate}}\right)^2 + 0.1 \times 10^{-24}} + \frac{\text{TimeScaleAccy} \cdot \text{Reading}}{2} \text{ sec pk}$$

Standard deviation,
averaging disabled

$$\sqrt{\left(\frac{1.4 \cdot \text{Noise}}{\text{SlewRate}}\right)^2 + 0.6 \times 10^{-24}} \text{ sec}_{\text{rms}}$$

Standard deviation,
> 256 averages

$$\sqrt{\left(\frac{0.1 \cdot \text{Noise}}{\text{SlewRate}}\right)^2 + 0.01 \times 10^{-24}} \text{ sec}_{\text{rms}}$$

Jitter measurement floor^{6a, 6b}

Time interval error^{6c}

$$\sqrt{\left(\frac{1.0 \cdot \text{Noise}}{\text{SlewRate}}\right)^2 + 0.3 \times 10^{-24}} \text{ sec}_{\text{rms}}$$

Period jitter

$$\sqrt{\left(\frac{1.4 \cdot \text{Noise}}{\text{SlewRate}}\right)^2 + 0.6 \times 10^{-24}} \text{ sec}_{\text{rms}}$$

N-cycle, cycle-cycle jitter

$$\sqrt{\left(\frac{2.4 \cdot \text{Noise}}{\text{SlewRate}}\right)^2 + 1.7 \times 10^{-24}} \text{ sec}_{\text{rms}}$$

Infiniium 90008 Low-profile oscilloscopes/digitizers

Performance characteristics

Acquisition

Maximum real-time sample rate	91308A/91208A/90808A: 40 GSa/s							
Memory depth per channel								
Standard	10 Mpts on 8 channels							
Option 20M	20 Mpts on 8 channels							
Option 50M	50 Mpts on 8 channels							
Option 100	100 Mpts on 8 channels							
Option 200	200 Mpts on 8 channels							
Option 500	500 Mpts on 8 channels							
Option 01G	1 Gpts on 8 channels							
Maximum acquired time at highest real-time resolution	91308A/91208A/90808A							
Resolution	25 ps (40 GSa/s)							
Standard	0.25 ms							
Option 20M	0.5 ms							
Option 50M	1.25 ms							
Option 100	2.5 ms							
Option 200	5.0 ms							
Option 500	12.5 ms							
Option 01G	25.0 ms							
Data transfer speed								
Gigabit Ethernet	Samples:	1 k	64 k	1 M	16 M	32 M	128 M	
	MSa/s (Word):	0.1	1.88	9.25	12.00	12.80	12.80	
	MSa/s (Byte):	0.11	1.88	12.60	19.70	20.30	22.00	
USB 2.0 hi-speed (device)	Samples:	1 k	64 k	1 M	16 M	32 M	128 M	
	MSa/s (Word):	0.11	1.88	8.34	8.55	9.07	11.38	
	MSa/s (Byte):	0.11	1.88	11.60	14.40	14.90	18.10	
Sampling modes								
Real-time	Successive single-shot acquisitions							
Real-time with averaging	Selectable from 2 to 65534							
Real-time with peak detect	91308A/91208A/90808A: 40 GSa/s							
Real-time with hi resolution	Real-time boxcar averaging reduces random noise and increases resolution							
Equivalent-time	Resolution: 100 fs							
	Full bandwidth on all 4 channels, 262,144 sample points maximum memory							
Segmented memory	Captures bursting signals at maximum sample rate without consuming memory during periods of inactivity							
	Number of segments:							
	Up to 131,072 segments (depending on installed memory depth and model number)							
	Minimum intersegment time:							
	91308A / 91208A / 90808A: 2.7 µs							
	(the time between the end of the previous acquisition and the beginning of the next acquisition)							
	Maximum number of segments:							
	Sample rate	10 M	20 M	50 M	100 M	200 M	500 M	1 G
	DSO91308A, 91208A, 90808A	1024	2048	4096	8192	16384	32768	65536
Filters								
Sin(x)/x Interpolation	On/off selectable FIR digital filter. Digital signal processing adds points between acquired data points to enhance measurement accuracy and waveform display quality.							

Infiniium 90008 Low-profile oscilloscopes/digitizers

Performance characteristics

Hardware trigger

Sensitivity ¹	91308A/91208A/90808A: Internal low ¹ : 2.0 div p-p 0 to 5 GHz Internal high ¹ : 0.3 div p-p 0 to 4 GHz, 1.0 div p-p 4 to 7.5 GHz
Level range	
Internal	± 4 div from center screen or ± 4 Volts, whichever is smallest
Auxiliary	± 5 V, also limit input signal to ± 5 V
Sweep modes	Auto, triggered, single
Display jitter (displayed trigger jitter) ^{6a, 8}	90808A, 91208A, 91308A: $\sqrt{\left(\frac{0.9 \cdot \text{Noise}}{\text{SlewRate}}\right)^2 + 0.3 \times 10^{-24} \text{ sec}_{\text{rms}}}$
Trigger sources	Channel 1, channel 2, channel 3, channel 4, aux, and line
Trigger modes	
Edge	Triggers on a specified slope (rising, falling or alternating between rising and falling) and voltage level on any channel or auxiliary trigger.
Edge transition	Trigger on rising or falling edges that cross two voltage levels in > or < the amount of time specified. Edge transition setting from 250 ps.
Edge then edge (time)	The trigger is qualified by an edge. After a specified time delay between 10 ns to 10 s, a rising or falling edge on any one selected input will generate the trigger.
Edge then edge (event)	The trigger is qualified by an edge. After a specified delay between 1 to 16,000,000 rising or falling edges, another rising or falling edge on any one selected input will generate the trigger.
Glitch	Triggers on glitches narrower than the other pulses in your waveform by specifying a width less than your narrowest pulse and a polarity. Triggers on glitches as narrow as 125 ps. Glitch range settings: < 250 ps to < 10 s.
Line	Triggers on the line voltage powering the oscilloscope.
Pulse width	Trigger on a pulse that is wider or narrower than the other pulses in your waveform by specifying a pulse width and a polarity. Triggers on pulse widths as narrow as 125 ps. Pulse width range settings: 250 ps to 10 s. Trigger point can be "end of pulse" or "time out".
Runt	Triggers on a pulse that crosses one threshold but fails to cross a second threshold before crossing the first again. Can be time qualified with minimum setting of 250 ps.
Timeout	Trigger when a channel stays high, low, or unchanged for too long. Timeout setting: from 250 ps to 10 s.
Pattern/pulse range	Triggers when a specified logical combination of the channels is entered, exited, present for a specified period of time or is within a specified time range or times out. Each channel can have a value of High (H), Low (L) or Don't care (X).
State	Pattern trigger clocked by the rising, falling or alternating between rising and falling edge of one channel.
Setup/hold	Triggers on setup, hold, or setup and hold violations in your circuit. Requires a clock and data signal on any two inputs (except aux or line) channels as trigger sources. Setup and/or hold time must then be specified.

Infiniium 90008 Low-profile oscilloscopes/digitizers

Performance characteristics

Hardware trigger (continued)

Trigger modes (continued)	
Window	Triggers on an event associated with a window defined by two-user adjustable thresholds. Event can be window "entered," "exited," "inside (time qualified)," or "outside (time qualified)" voltage range. Trigger point can be "cross window boundary" or "time out." Time qualify range: from 250 ps to 10 s.
Video	Triggers from negative sync composite video, field 1, field 2, or alternating fields for interlaced systems, any field, specific line, or any line for interlaced or non-interlaced systems. Supports NTSC, PAL-M (525/60), PAL, SECAM (625/50), EDTV (480p/60), EDTV (576p/50), HDTV (720p/60), HDTV (720p/50), HDTV (1080i/60), HDTV (1080i/50), HDTV (1080p/60), HDTV (1080p/50), HDTV (1080p/30), HDTV (1080p/25), HDTV (1080p/24), and user-defined formats.
Trigger sequences	Three stage trigger sequences including two-stage hardware (Find event (A) and Trigger event (B)) and one-stage InfiniiScan software trigger. Supports all hardware trigger modes except "edge then edge" and "video," and all InfiniiScan software trigger modes. Supports "delay (by time)" and "reset (by time or event)" between two hardware sequences. The minimum latency between "find event (A)" and "trigger event (B)" is 3 ns.
Trigger qualification AND qualifier	Single or multiple channels may be logically qualified with any other trigger mode
Trigger holdoff range	100 ns to 10 s
Trigger actions	Specify an action to occur and the frequency of the action when a trigger condition occurs. Actions include e-mail on trigger and execute "multipurpose" user setting.
Trigger shortcuts	Provides easy shortcuts to all trigger features

Software trigger (requires InfiniiScan event identification software – N5415A)

Trigger modes	
Generic serial	Software triggers on NRZ-encoded data up to 8.0 Gbps, up to 80-bit pattern. Support multiple clock data recovery methods including constant frequency, 1st-order PLL, 2nd-order PLL, explicit clock, explicit 1st-order PLL, explicit 2nd-order PLL, Fibre Channel, FlexRay receiver, FlexRay transmitter (requires E2688A except for the constant frequency clock data recovery mode).
Measurement limit	Software triggers on the results of the measurement values. For example, when the "pulse width" measurement is turned on, InfiniiScan measurement software trigger triggers on a glitch as narrow as 75 ps. When the "time interval error (TIE)" is measured, InfiniiScan can trigger on a specific TIE value.
Non-monotonic edge	Software triggers on the non-monotonic edge. The non-monotonic edge is specified by setting a hysteresis value.
Runt	Software triggers on a pulse that crosses one threshold but fails to cross a second threshold before crossing the first again. Unlike hardware runt trigger, InfiniiScan runt trigger can be further qualified via a hysteresis value.
Zone qualify	Software triggers on the user defined zones on screen. Zones can be specified as either "must intersect" or "must not intersect." Up to four zones can be defined.

Measurements and math

Maximum measurement update rate	> 42,000 measurement/sec (one measurement turned on) > 122,000 measurement/sec/measurement (five measurements turned on)
Measurement modes	Standard, Measure All Edges mode

Infiniium 90008 Low-profile oscilloscopes/digitizers

Performance characteristics

Measurements and math (continued)

Waveform measurements	
Voltage	Peak to peak, minimum, maximum, average, RMS, amplitude, base, top, overshoot, preshoot, upper, middle, lower
Time	Rise time, fall time, period, frequency, positive width, negative width, duty cycle, burst width, Tmin, Tmax, Tvolt, setup time (requires Option 002 or 004, standard on DSA models), hold time (requires Option 002 or 004, standard on DSA models), channel-to-channel delta time, channel-to-channel phase
Mixed	Area, slew rate
Frequency domain	FFT frequency, FFT magnitude, FFT delta frequency, FFT delta magnitude
Level qualification	Any channels that are not involved in a measurement can be used to level-qualify all timing measurements
Eye-diagram measurements	
Eye height, eye width, eye jitter, crossing percentage, Q factor, and duty-cycle distortion	
Jitter analysis measurements	
Requires E2681A or N5400A.	
Clock	Time interval error (TIE) clock with TIE band, high, low-pass filter, cycle-cycle jitter, N-cycle jitter, cycle-cycle + width, cycle-cycle width, cycle-cycle duty cycle
Data	Time interval error (TIE) data with TIE band, high, low-pass filter, data rate, unit interval, clock recovery rate
Timing	Two sources: Setup time, hold time, phase, advanced One source: Period, frequency, + width, width, duty cycle, burst width, rise time, fall time, slew rate
Statistics	
Displays the current, mean, minimum, maximum, range (max-min), standard deviation, number of measurements value for the displayed automatic measurements	
Histograms	
Source	Waveform or measurement
Orientation	Vertical (for timing and jitter measurements) or horizontal (noise and amplitude change) modes, regions are defined using waveform markers
Measurements	Mean, standard deviation, mean $\pm 1, 2$, and 3 sigma, median, mode, peak-to-peak, min, max, total hits, peak (area of most hits), X scale hits, and X offset hits
Mask testing	
Allows pass/fail testing to user-defined or Agilent-supplied waveform templates. Automask lets you create a mask template from a captured waveform and define a tolerance range in time/voltage or screen divisions. Test modes (run until) include test forever, test to specified time or event limit, and stop on failure. Executes "multipurpose" user setting on failure. "Unfold real time eye" feature will allow individual bit errors to be observed by unfolding a real time eye when clock recovery is on. Communications mask test kit option provides a set of ITU-T G.703, ANSI T1.102, and IEEE 802.3 industry-standard masks for compliance testing.	
Waveform math	
Number of functions	Four
Operators	Absolute value, add, average, Butterworth ⁹ , common mode, differentiate, divide, FFT magnitude, FFT phase, FIR ⁹ , high pass filter, integrate, invert, LFE ⁹ , low pass filter (4th-order Bessel Thompson filter), magnify, max, min, multiply, RT Eye ⁹ , smoothing, SqrtSumOfSquare ⁹ , square, square root, subtract, versus, and optional user defined function (Option 010)
FFT	
Frequency range ⁴	DC up to 20 GHz (at 40 GSa/s) or 10 GHz (at 20 GSa/s)
Frequency resolution	Sample rate/memory depth = resolution
Best resolution at maximum sample rate	91308A/91208A/90808A: 800 Hz
Frequency accuracy	(1/2 frequency resolution) + (1 x 10 ⁻⁶)(signal frequency)

Infiniium 90008 Low-profile oscilloscopes/digitizers

Performance characteristics

Measurements and math (continued)

FFT (continued)	
Signal-to-noise ratio ⁵	60 dB to > 100 dB depending on settings
Window modes	Hanning, flattop, rectangular
Measurement modes	
Automatic measurements	Measure menu access to all measurements, five measurements can be displayed simultaneously
Multipurpose	Front-panel button activates five pre-selected or five user-defined automatic measurements
Drag-and-drop measurement toolbar	Measurement toolbar with common measurement icons that can be dragged and dropped onto the displayed waveforms
Marker modes	Manual markers, track waveform data, track measurements

External Display (not included)

Intensity grayscale	256-level intensity-graded display
Resolution XGA	1024 pixels horizontally x 768 pixels vertically
Annotation	Up to 12 labels, with up to 100 characters each, can be inserted into the waveform area
Grids	One, two or four waveform grids, each with 8 bit vertical resolution
Waveform styles	Connected dots, dots, infinite persistence, color graded infinite persistence. Includes up to 256 levels of intensity-graded waveforms.
Waveform update rate	
Maximum waveform update	> 400,000 waveforms per second (when in the segment memory mode)

Computer system and peripherals, I/O ports

Computer system and peripherals	
Operating system	Windows® XP Pro
CPU	Intel® Pentium® 4 3.4-GHz microprocessor
PC system memory	2 GB DDR2 (standard) 4 GB DDR2 (optional N5413A)
Drives	≥ 250-GB internal hard drive Optional removable hard drive (2 standard) Optional USB external DVD-RW drive (Option 820)
Peripherals	Logitech optical USB mouse, compact USB keyboard and stylus supplied. All Infiniium models support any Windows-compatible input device with a serial, PS/2 or USB interface.
File types	
Waveforms (supported max memory size)	Compressed internal format (*.wfm (200 Mpts)), comma-separated values (*.csv (1 Gpts)), tab separated values (*.tsv (1 Gpts)), public binary format (.bin (500 Mpts)), Y value files (*.txt (1 Gpts))
Images	BMP, PNG, TIFF, GIF or JPEG
I/O ports	
LAN	RJ-45 connector, supports 10Base-T, 100Base-T, and 1000Base-T. Enables Web-enabled remote control, e-mail on trigger or demand, data/file transfers and network printing (VXI-11). Recommended Web remote control tool: Ultra VNC (http://www.ultravnc.com/).

Infiniium 90008 Low-profile oscilloscopes/digitizers

Performance characteristics

Computer system and peripherals, I/O ports (continued)

I/O ports (continued)	
GPIO	IEEE 488.2, fully programmable (optional – Option 805)
RS-232 (serial)	COM1, printer and pointing device support
Parallel	Centronics printer port
PS/2	Four ports, Supports PS/2 pointing and input devices.
USB 2.0 hi-speed (host)	Eight USB 2.0 Hi-Speed host ports on rear panel
Dual-monitor video output	15 pin XGA (1024x768), full color output of scope waveform display or dual monitor video output
Auxiliary output	DC (± 2.4 V); square wave (~ 715 Hz and ~ 456 MHz); trigger output (255 mV p-p into 50)
Trigger output	5 V 50 Ω back-terminated
Time base reference output	10 MHz filtered sine wave with all harmonics ≤ -40 dBc. Amplitude into 50 Ω : 800 mV p-p to 1.26 V p-p (4 dBm ± 2 dB) if derived from internal reference. Tracks external reference input amplitude ± 1 dB if applied and selected.
Time base reference input	Must be 10 MHz, input Z0 = 50 Ω . Minimum 500 mV p-p (-2 dBm), maximum 2.0 V p-p (+10 dBm).
LXI compliance	Functional Class C

General characteristics

Temperature ¹¹	Operating: 5 °C to +40 °C; Non-operating: -40 °C to +70 °C
Humidity	Operating: up to 95% relative humidity (non-condensing) at +40 °C; Non-operating: up to 90% relative humidity at +65 °C
Altitude	Operating: up to 4,000 meters (12,000 feet); Non-operating: up to 15,300 meters (50,000 feet)
Vibration	Operating: random vibration 5 - 500 Hz, 10 minutes per axis, 0.3 g(rms); Non-operating: random vibration 5 - 500 Hz, 10 minutes per axis, 2.41 g(rms); resonant search 5-500 Hz, swept sine, 1 octave/minute sweep rate, (0.75 g), 5 minute resonant dwell at 4 resonances per axis
Power	Two, 100 - 240 VAC at 50/60 Hz inputs; maximum input power 800 Watts each
Weight	Net: 44.6 kg (98.3 lbs.) Shipping: 30.4 kg (67 lbs.)
Dimensions (excluding handle)	Height: 283 mm (11.13 inch); Width: 432 mm (17.02 inch); Depth: 506 mm (19.91 inch)
Safety	Meets IEC 61010-1 +A2, CSA certified to C22.2 No.1010.1, self-certified to UL 3111

* Denotes warranted specifications, all others are typical. Specifications are valid after a 30-minute warm-up period, and ± 5 °C from annual calibration temperature.

1 Full scale is defined as 8 vertical divisions. Magnification is used below 5 mV/div. Below 5 mV/div, full-scale is defined as 40 mV. The major scale settings are 5 mV, 10 mV, 20 mV, 50 mV, 100 mV, 200 mV, 500 mV, 1 V.

2 Vertical resolution for 8 bits = 0.4% of full scale, for 12 bits = 0.024% of full scale.

3 13 GHz DSP enhanced bandwidth not applicable at 5 mV/div.

4 FFT amplitude readings are affected by scope and probe bandwidth limitations and input amplifiers roll-off (e.g. 3 dB roll-off at specified bandwidth of scope/probe).

5 The FFT signal to noise ratio varies with volts/division setting, memory depth and use of time or frequency averaging.

6a Noise is the displayed noise floor. SlewRate is the displayed slew rate of the signal at the threshold crossings. Sample rate = max, sin(x)/x interpolation enabled.

6b Measurement threshold = fixed voltage at 50% level.

6c Time ranges ≤ 10 μ s.

7 Values represent time error between two edges on a single channel. Standard deviation value refers to the standard deviation of 256 consecutive measurements performed using an individual instrument. Reading is the displayed DTMA measurement value. TimeScaleAccy is the oscilloscope's specified time scale accuracy.

8 Internal edge trigger mode. Trigger threshold = fixed voltage at 50% level. The slew rate independent value in the formula represents the traditional trigger jitter.

9 Requires N5430A user defined function.

10 11.8 GHz analog bandwidth at 5 mV/div for DS091308A and DS091208A models.

11 Calculated from the bandwidth.

12 Typically triggers as low as 5 mV/div sensitivity.

Infiniium 90008 Low-profile oscilloscopes/digitizers

Infiniium DS090000A Series oscilloscopes

Model	Bandwidth	Channels	Sample rate	Standard memory
DS091308A	13 GHz	8	40 GSa/s	10 Mpts
DS091208A	12 GHz	8	40 GSa/s	10 Mpts
DS090808A	8 GHz	8	40 GSa/s	10 Mpts

Note: The DS091308A uses DSP enhancement software to achieve 13 GHz bandwidth. It also adds a valuable DSP noise reduction and bandwidth control feature to reduce noise at bandwidths of 10, 8, 6, 4, 2, and 1 GHz. The non-DSP enhanced bandwidth of the DS091308A is 12 GHz.

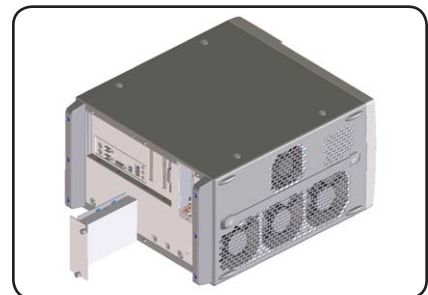
Standard accessories

- USB optical mouse (2)
- USB keyboard (2)
- User's quick-start guide
- Power cord
- High-performance calibration cable
- E2655B probe deskew and performance verification kit
- High-performance calibration cable
- E2655B probe deskew and performance verification kit
- One-year warranty
- GPIB Card-interface (2)
- Removable hard drive (2)
- Rack mount kit

Note: No probes are included with the DS090008A Series oscilloscopes. The InfiniiMax Series probes or any other probes must be purchased separately.

Additional options and accessories

DS090000A-807	1 M ohm, adapter with a 500 MHz passive probe
DS090000A-820	DVD-RW
DS090000A-822	External Touchscreen Monitor for Infiniium



Quickly remove your hard drive for additional security

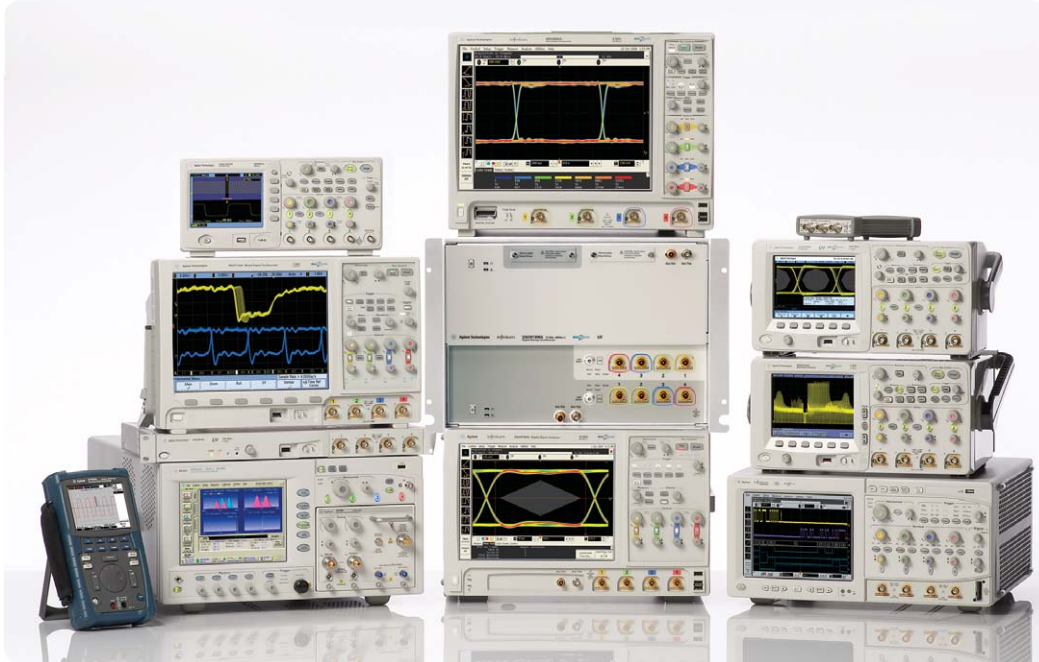
Post-sales upgrades

DS090000A-01G	1G Memory / CH Upgrade
DS090000A-100	100M Memory / CH Upgrade
DS090000A-200	200M Memory / CH Upgrade
DS090000A-20M	20M Memory / CH Upgrade
DS090000A-500	500M Memory / CH Upgrade
DS090000A-50M	50M Memory / CH Upgrade

Infiniium 90008 Low-profile oscilloscopes/digitizers








Factory installed option for new purchases	User installed standalone product number	SW applications
	E2681A	EZJIT jitter analysis software (standard on DSA Series)
	E2688A	High-Speed serial data analysis with clock recovery and 8b/10b decoding (standard on DSA Series)
	N5400A	EZJIT Plus jitter analysis software (standard on DSA Series)
	N5403A	Noise reduction and bandwidth control option (standard on DSA Series and DS091304A)
	N5391A	Low-speed serial data analysis for I2C/SPI
	N5402A	Automotive serial data analysis for CAN / FlexRay
	N5414A	InfiniiScan event identification software
	N5430A	Infiniium user-defined function application software
	N5452A	Infiniium application remote program interface software
	N5461A	Serial Data Equalization
	N5465A	Basic InfiniiSim Waveform Transformation Toolset
	N5465A	Advanced InfiniiSim Waveform Transformation Toolset
	N5462A	RS-232/UART serial decode and trigger
	N5464A	USB serial trigger and protocol viewer
	N5463A	PCI Express® serial trigger and protocol viewer
	N8801A	SATA triggering and decode
	N8802A	MIPI D-Phy trigger and decode
	N5392A	Ethernet electrical performance validation and compliance software
	N5393B	PCI EXPRESS electrical performance validations and compliance software
	N5399A	HDMI electrical performance validation and compliance software
	N5409A	Fully buffered DIMM compliance applications
	N5410A	Fibre channel compliance applications
	N5411A	Serial ATA electrical performance validation and compliance software
	N5412A	Serial attached SCSI (SAS) electrical performance validation and compliance
	U7232A	DisplayPort compliance test software
	N5416A	USB 2.0 compliance test software
	N5431A	XAUI electrical validation with 10GBASE-CX4, CPRI, OBSAI, and Serial RapidIO
	U7233A	DDR1 compliance test applications
	N5413A	DDR2 compliance test applications
	U7231A	DDR3 compliance test applications
	N5394A	DVI compliance application
	U7238A	MIPI compliance test application
	U7236A	10GBASE-T Ethernet Electrical Compliance Application
	N5411B	SATA 6G Compliance Test Software
	N5467A	User-definable application
	U7243A	USB 3.0 Compliance Test Software
061		MATLAB - Basic Digital Analysis Package
062		MATLAB - Standard Digital Analysis Package

Infiniium 90008 Low-profile oscilloscopes/digitizers



Agilent Technologies Oscilloscopes

Multiple form factors from 20 MHz to >90 GHz | Industry leading specs | Powerful applications

U1061A	U1064A	U1062A	DS06104L	U1065A	DS090808A	DS091208A	DS091308A
							
1 GHz	1 GHz	2 GHz	1 GHz	3 GHz	8 GHz	12 GHz	13 GHz
2 GSa/s	4 GSa/s	4 GSa/s	4 GSa/s	8 GSa/s	40 GSa/s	40 GSa/s	40 GSa/s
8 bits	8 bits	10 bits	8 bits	10 bits	8 bits	8 bits	8 bits
2 channel	4 channel	2 channel	4 channel	4 channel	8 channel	8 channel	8 channel
16 M	32 M	512 M	8 M	1 G	1 G	1 G	1 G

Agilent's Complete High Speed Digitizer Portfolio



Agilent Email Updates

www.agilent.com/find/emailupdates

Get the latest information on the products and applications you select.



Agilent Direct

www.agilent.com/find/agilentdirect

Quickly choose and use your test equipment solutions with confidence.



www.lxistandard.org

LXI is the LAN-based successor to GPIB, providing faster, more efficient connectivity. Agilent is a founding member of the LXI consortium.

Remove all doubt

Our repair and calibration services will get your equipment back to you, performing like new, when promised. You will get full value out of your Agilent equipment throughout its lifetime. Your equipment will be serviced by Agilent-trained technicians using the latest factory calibration procedures, automated repair diagnostics and genuine parts. You will always have the utmost confidence in your measurements.

Agilent offers a wide range of additional expert test and measurement services for your equipment, including initial start-up assistance onsite education and training, as well as design, system integration, and project management.

For more information on repair and calibration services, go to

www.agilent.com/find/removealldoubt

Windows® is a U.S. registered trademark of Microsoft Corporation.

PCI Express and PCIe are registered trademarks of PCI-SIG.

MATLAB is a U.S. registered trademark of The MathWorks, Inc.

VESA, VESA logo, and DisplayPort Certified Logo are trademarks of the Video Electronics Standards Association.

The USB-IF Logos are trademarks of Universal Serial Bus Implementers Forum, Inc.

HDMI, the HDMI logo and High-Definition Multimedia Interface are trademarks or registered trademarks of HDMI Licensing LLC.

MIPI is a licensed trademark of MIPI, Inc. in the U.S. and other jurisdictions.

www.agilent.com

www.agilent.com/find/90008

For more information on Agilent Technologies' products, applications or services, please contact your local Agilent office. The complete list is available at:

www.agilent.com/find/contactus

Americas

Canada	(877) 894-4414
Latin America	305 269 7500
United States	(800) 829-4444

Asia Pacific

Australia	1 800 629 485
China	800 810 0189
Hong Kong	800 938 693
India	1 800 112 929
Japan	0120 (421) 345
Korea	080 769 0800
Malaysia	1 800 888 848
Singapore	1 800 375 8100
Taiwan	0800 047 866
Thailand	1 800 226 008

Europe & Middle East

Austria	43 (0) 1 360 277 1571
Belgium	32 (0) 2 404 93 40
Denmark	45 70 13 15 15
Finland	358 (0) 10 855 2100
France	0825 010 700*
*0.125 €/minute	
Germany	49 (0) 7031 464 6333
Ireland	1890 924 204
Israel	972-3-9288-504/544
Italy	39 02 92 60 8484
Netherlands	31 (0) 20 547 2111
Spain	34 (91) 631 3300
Sweden	0200-88 22 55
Switzerland	0800 80 53 53
United Kingdom	44 (0) 118 9276201

Other European Countries:

www.agilent.com/find/contactus

Product specifications and descriptions in this document subject to change without notice.

October 1, 2009

© Agilent Technologies, Inc. 2009
Printed in USA, November 10, 2009
5990-4716EN



Agilent Technologies