

Table 1-1. Specifications

PLUG-INS

Accepts Model 8050-series IF and RF Section spectrum analyzer plug-ins without the use of a center divider shield

Also, accepts all HP Model 1100-series plug-ins. All plug-ins operate directly into the horizontal and vertical deflection plates. Centaur shield may be removed to provide double-sized compartment for use with a single, dual axis Model 1400-series unit.

CATHODE-RAY TUBE

Type:

Post-accelerator storage tube; 9000s V accelerating potential; aluminized P31 phosphor; etched safety glass face plate.

Graticule:

8 x 10 divisions (approx. 7.1 : 8.9 cm) parallax-free internal graticule. Subdivisions of 0.2 div per major division on major horizontal and vertical axes.

Intensity Modulation:

AC coupled, -20 volt pulse will blank trace of normal intensity, input terminals on rear panel.

PERSISTENCE

Conventional:

Natural persistence of P31 phosphor (about 40 usec).

Variable:

STANDARD Writing Speed Mode: Continuously variable from less than 0.2 second to more than one minute.

ERASE

Manual or optional remote (see Section VII options): Erasure takes approximately 350 msec; scope ready to record immediately after erasure.

WRITING SPEED PHOTOGRAPHIC

Conventional operation (using a HP Model 197A camera with f/1.9 lens and Polaroid 3000 speed-film): 100 div 'usec.

WRITING SPEED

Storage:

Standard Mode: greater than 20 div/ms. Fast Mode: greater than 1 div/usec.

STORAGE TIME

Standard Writing Speed: more than two hours at reduced brightness (typically four hours). Traces may be viewed at maximum brightness for more than one minute.

Fast Writing Speed. traces may be stored at reduced brightness for more than 15 minutes (typically 30 minutes) or stored at maximum brightness for more than 15 seconds.

Brightness:

100 foot-lamberts in standard mode.

CALIBRATOR

Type:

Line-frequency rectangular signal, approximately 0.5 usec rise time.

Voltage.

Two outputs. 1 volt and 10 volts peak-to-peak $\pm 1\%$ from 15°C to 35°C, $\pm 3\%$, from 0°C to 55°C.

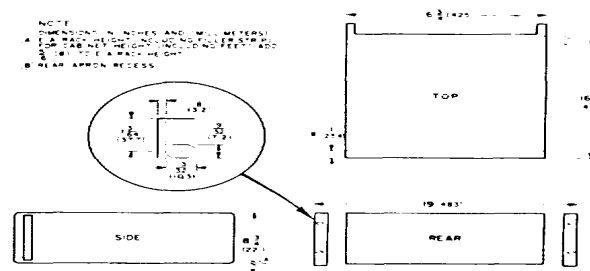
BEAM FINDER

Pressing BEAM FINDER pushbutton brings trace on screen regardless of setting of horizontal, or vertical position controls.

GENERAL

Power Requirements:

100, 120, 220 or 240 volts (+5 to -10%), 48 to 66 Hz (Option H16 48 to 440 Hz), normally less than 285 watts (varies with plug-in units).



Weight:

Net, 40 lbs (18 kg) (without plug-ins). Shipping, 51 lbs. (23 kg).